

## PET L-Block Overlapping Lead Brick Cave



Stainless Steel covered PET L-Block

Dimensions:

L-Block with 8" x 8" x 4" lead glass: 14" W x 15" D x 20 3/4" H

Choice of Lead Thickness:

2" in Front and 2" in Base or  
1.5" in Front and 1" in Base

Overlapping Lead Brick Cave Dimensions:

19 1/4" W x 18 1/2" D x 13" H

**Installs easily, assembly instructions provided**

LBM-101	PET L-Block	2" lead front	2" lead base	8" x 8" x 4" lead glass	Weight 460 lb
INLB-100	Overlapping Lead Brick Cave for above L-Blocks				Weight 550 lb
	with 3-Piece Stainless Steel cover, 2" Lead				

## PET L-Block with Dose Calibrator Chamber Hole



- Dose Calibrator Chamber can be placed on the countertop or recessed into the cabinet
- 2" lead shielded front and base
- 8" x 8" x 4" lead glass, density of 5.2 g/cm<sup>3</sup>
- 12.25" Chamber Hole on bottom
- Flanges for securing L-Block to countertop

Specifications:

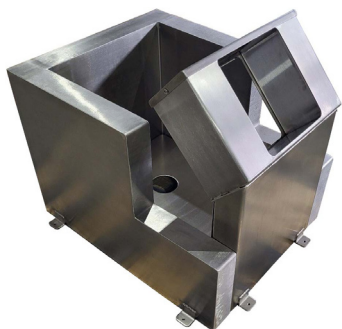
Dimensions: 14" W x 20.25" H x 21.25" D, with hole for Dose Calibrator

Shielding: 2" lead in front and base

Lead Glass: 8" x 8" x 4" 5.2 g/cm<sup>3</sup> density

Finish: Stainless Steel

Weight: 525 lb



PET-PRH  
INLB-PETPRH

PET L-Block with Dose Calibrator Chamber Hole  
Overlapping Lead Brick Cave for PET-PRH, 2" Lead

**\*\*Specifications are subject to change\*\***