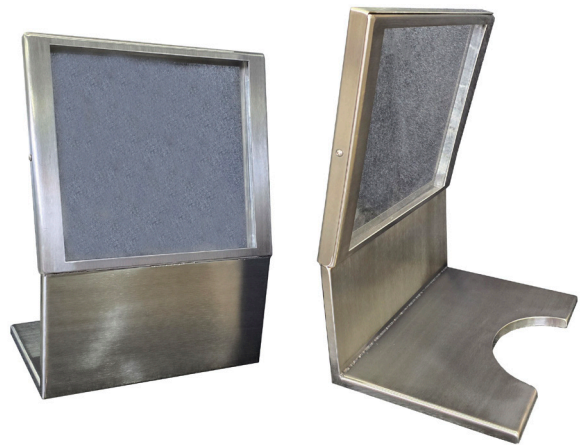

L-Block for Nuclear Medicine

- 0.5" Lead in the bottom and front of unit
- Lead Glass 12" x 12" (Quantity 2)
- 1.8mm Lead Equivalency
- Bite Cut Out for Dose Calibrator Chamber
- Width: 13.75"
- Depth: 10.25"
- Height: 19.125"
- 75 lbs total including lead glass



NMLB-BCO L-Block for Nuclear Medicine with Bite Cut Out