

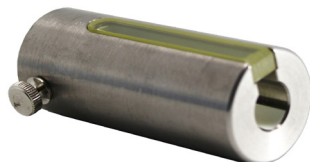
## Pro-Tec™ PET Syringe Shields

- Constructed of .34" thick (9 mm) tungsten, attenuates FDG F-18 by 88%
- Available with or without a high density (5.6) flush mounted lead glass window
- A thumbscrew holds the syringes firmly in place



### Without Lead Glass Window

007-985	Syringe Shield, 3 cc without glass
007-990	Syringe Shield, 5 cc without glass
007-995	Syringe Shield, 10 cc without glass



### With Lead Glass Window

007-973	Pro-Tec PET Syringe Shield, 3 cc
007-975	Pro-Tec PET Syringe Shield, 5 cc
007-980	Pro-Tec PET Syringe Shield, 10 cc

### Replacement Screw

000-PET	Pro-Tec PET Replacement Screw
---------	-------------------------------

### Replacement Glass

007-974	Pro-Tec PET Replacement Glass
---------	-------------------------------

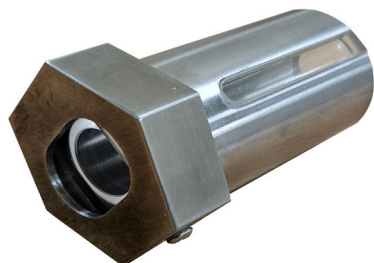
## PET Syringe Shields for HSW/Norm Ject Syringes



- Available with or without Lead glass window
- 9mm tungsten

3HSW	3cc Syringe Shield for HSW/Norm Ject Syringes, No Lead Glass
------	--

5HSW	5cc Syringe Shield for HSW/Norm Ject Syringes, No Lead Glass
------	--

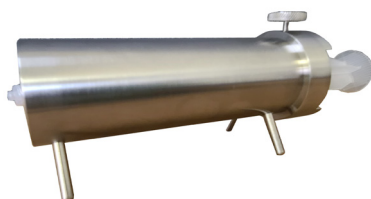


3HSW-G	3cc Syringe Shield with Lead Glass for HSW/Norm Ject Syringes
--------	---

5HSW-G	5cc Syringe Shield with Lead Glass for HSW/Norm Ject Syringes
--------	---

12HSW-PG	12cc Syringe Shield with Lead GLass for HSW/Norm Ject Syringes
----------	--

## 50 / 60 cc Syringe Shield



- 9mm Tungsten
- 4 Legs to prevent rolling
- Screw locks syringe in place
- 5.75" L x 1.875" D x 3.25" H (height to screw)
- Weight: 6.6 lbs

60-09T	50/60 ml, 9mm Tungsten Syringe Shield
--------	---------------------------------------

PET-14SC	Replacement Screw for 60-09T
----------	------------------------------