

PET-CT Phantom™

The PET-CT Phantom™ includes internal structures (3 rods and 6 spheres) which, when imaged with both modalities, can demonstrate how accurately the two image sets are aligned.

Main Cylinder: Interior length of phantom: 18 cm
 Fillable spheres (5) inner dia: 10, 13, 17, 22, 28 mm
 Distance from sphere plane to inside wall: 7 cm
 Volume of empty cylinder: ~9.7 liters
 Main Cylindrical insert dims: O.D.: 5.1 cm
 Length: 18 cm
 Top Cylinder: O.D.: ~ 5.1 cm I.D.: ~ 4 cm
 I.D.: ~ 4 cm
 Inside Height: ~ 8.2 cm
 Outside Height: ~ 12 cm
 Volume of empty cylinder: 408 mL

Three Aluminum Tubes:
 One 5 inch long: ~ 1.7 mL
 Two 7 inch (ea): ~ 2.5 mL

Stepped Bone Ring:
 Pre-filled with liquid bone composition, not to be opened.

The volumes for bone ring are:
 Outer volume: ~ 256 mL
 Inner volume: ~ 110 mL



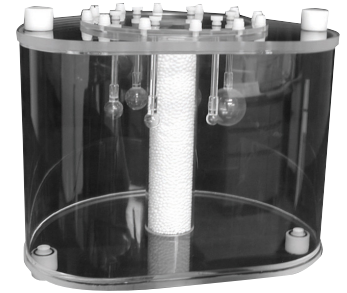
043-771 PET-CT Phantom

NEMA IEC PET Body Phantom Set™

The NEMA IEC Body Phantom Set consists of a body phantom, a lung insert and an insert with six spheres of various sizes. Recommended for use in the evaluation of reconstructed image quality in whole body PET imaging.

Specifications:

Interior Length of Phantom: 180 mm
 Fillable Spheres (6) Inner Dia: 10, 13, 17, 22, 28, 37 mm
 Distance from Sphere Plane to Inside Wall: 70 mm
 Volume of empty cylinder: 9.7 L
 Cylindrical Insert Dimension:
 O.D: 51 mm Length: 180 mm



043-767 NEMA IEC PET Body Phantom Set

EHS-SET6-PET PET Body Hollow Sphere Set (6) 10, 13, 17, 22, 28, 37mm

NEMA PET Scatter Phantom™

The NEMA Scatter Phantom is designed to standardize the measurement of count rate performance of a scintillation camera in the presence of scatter. The high density polyethylene cylinder has a fillable line source holder parallel to the center axis of the cylinder and offset a distance of O.D. 4.5 cm.

Specifications:

Outside Diameter: 203 cm
 Length: 70 cm
 Cylinder Hole Size: 6.4 mm
 Cylinder Hole Offset: 4.5 cm
 Line Source Dims:
 Length: 80 cm
 I.D.: 3.2 mm O.D.: 5 mm



043-768 NEMA PET Scatter Phantom

NEMA PET Sensitivity Phantom™

The NEMA Sensitivity Phantom consists of 6 concentric aluminum tubes used to detect camera sensitivity in PET.

Five internally stacked concentric aluminum tubes - all 700 mm in length

1st Tube	Inside Dia: 3.9 mm	Outside Dia: 6.4 mm
2nd Tube	Inside Dia: 7.0 mm	Outside Dia: 9.5 mm
3rd Tube	Inside Dia: 10.2 mm	Outside Dia: 12.7 mm
4th Tube	Inside Dia: 13.4 mm	Outside Dia: 15.9 mm
5th Tube	Inside Dia: 16.6 mm	Outside Dia: 19.1 mm

6th Innermost Tube (Fillable Polyethylene Tubing)

Inside Dia: 1 mm Outside Dia: 3 mm

043-769 NEMA 2007 PET Sensitivity Phantom

