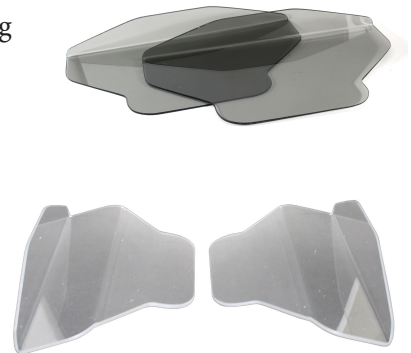


## Side Arm Holders

- Fits under the mattress and is held in place via patient weight
- Versatile support aid that permits comfortable "at the side" arm positioning
- A proven addition to narrow imaging tables
- Universal design is compatible with most imaging tables
- Resilient Lexan construction
- Available in Clear or Smoke color

Patient Platform area: 18" long, 3" tall support edge  
 Overall Dimensions: 18" x 10 1/2"

- NMC-3017 Side Arm Holder, Smoke color, 1 pair  
 5200-3563 Side Arm Holder, Clear color, 1 pair



## Arm & Leg Guard

- Securely holds patients arms and legs during any long procedure
- Sold by the pair
- 3/16" clear acrylic (Small, Large, XL), 1/4" clear acrylic (XXL)
- For use on tables 22" or wider
- Clean with a mild detergent

- PTI-7459SM Arm & Leg Guard, Small, 1 pair  
 11.5" W x 6.5" H x 11" D, Wt 8 lb
- PTI-7459LG Arm & Leg Guard, Large, 1 pair  
 11.5" W x 8" H x 11" D, Wt 8 lb
- PTI-7459XL Arm & Leg Guard, X-Large, 1 pair  
 28.5" W x 6.5" H x 11" D, Wt 14 lb
- PTI-7459XXL Arm & Leg Guard, XX-Large, 1 pair  
 28.5" W x 10" H x 16" D, Wt 16 lb



## SPECT Arm Boards

- Designed to fit on all SPECT tables
- They are solid under the patient while lying on the table to effectively widen the surface
- The patient's arms can be held comfortably next to the body while imaging the head
- The amount of overhang on the side of the table is adjusted by sliding the arm board further under the patient or pulling them further out for a wider surface
- Built with a convenient bend in them to aid in patient comfort and positioning
- Clear Plexiglass, they ship with a removable black film to protect from scratches

Dimensions: Length: 20"  
 Width: Tapered 13.75" to 10.75"  
 Thickness: 1/4" Plexiglass

- NMC-SAB SPECT Arm Boards, 1 pair

