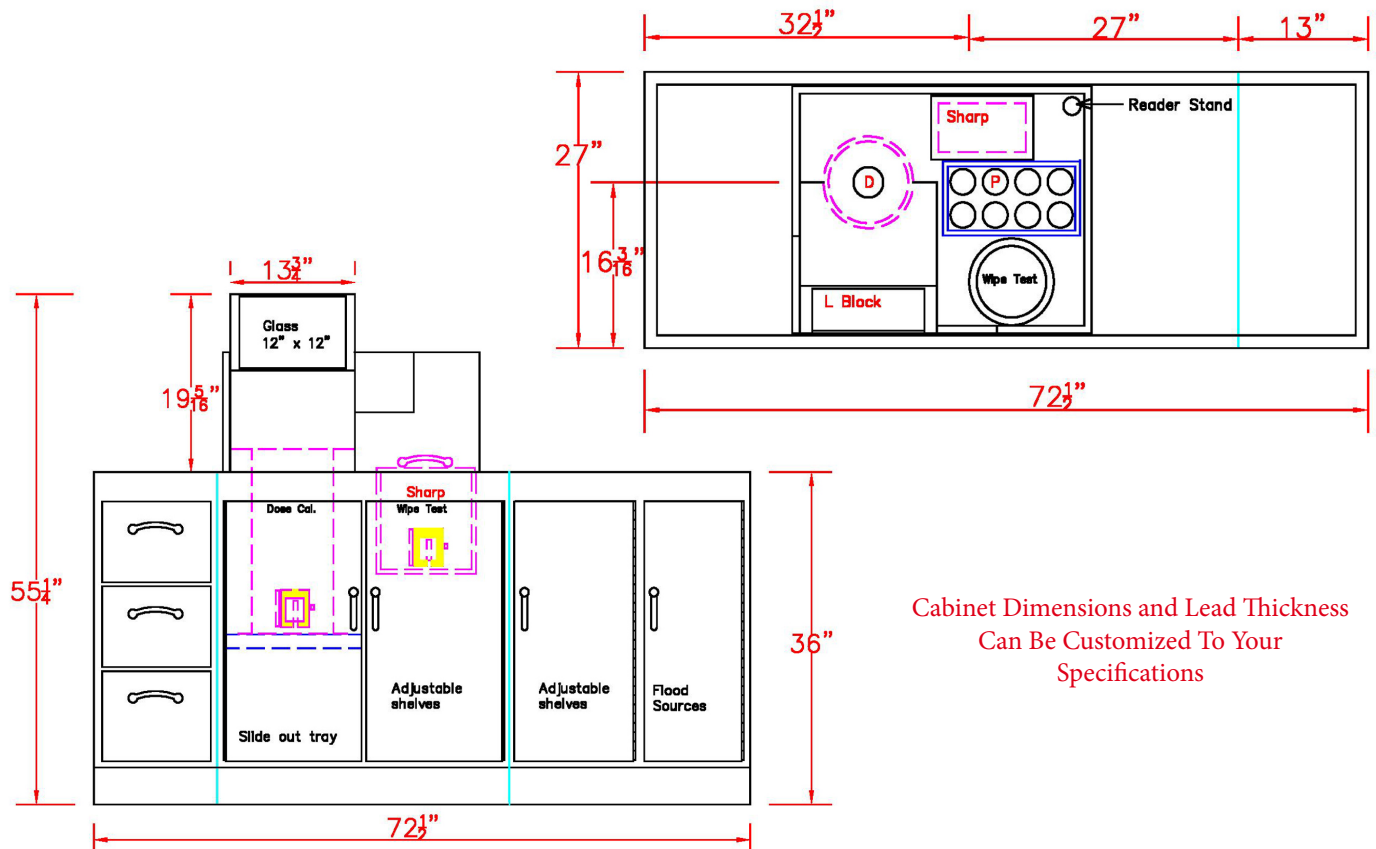


Lead-Lined Cabinet For Nuclear Medicine



Cabinet Dimensions and Lead Thickness
Can Be Customized To Your
Specifications

- 1/4" lead lining on front, back, top, sides, doors and drawers
- Non-spill lip (marine edge on top surface with 4" backsplash)
- L-Block with 1/2" lead lining in front with 12" x 12" lead glass (2mm lead equivalent)
- Cave with 1/2" lead lining with arm slots
- **Three Drawer Compartment:** Drawer inside dimensions: 10.5" W x 24" D x 7.5" H
- **Left side Compartment:** 13.5" W x 25" D x 26 11/16" H
1/4" Lead inside and slide out tray
- **Second Compartment from left:** 13.5" W x 25" D x 26 11/16" H
1/2" lead-lined Wipe Test Counter Chamber shield
1/4" lead-lined Sharps Container shield
Pig Holder
with adjustable shelves
- **Third Compartment from left:** 13 3/8" W x 25" D x 26 11/16" H
with adjustable shelves
- **Right Compartment:** 7.5" W x 25" D x 26 11/16" H
Designed for Flood Sources