

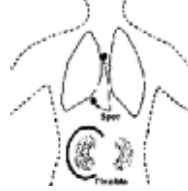
## Rod Sources



- Each source consists of a lucite rod measuring 5" x 0.5" (127 mm x 12.7 mm) or can be custom ordered as 2.95" x 0.5" (74.9 mm x 12.7 mm)
- The activity is located in a 0.187" x 0.187" (4.75 mm x 4.75 mm) well, positioned approximately 0.250" (6.35 mm) from the top of the rod
- Rod sources are calibrated and NIST traceable with an accuracy of  $\pm 5\%$  at the 99% level

Model#	Isotope	Activity
063-137	Co-57	0.1 $\mu$ Ci
063-Co-1.0	Co-57	1.0 $\mu$ Ci
063-138	Ba-133	0.1 $\mu$ Ci
063-139	Cs-137	0.1 $\mu$ Ci
NMC-010	Co-57	10 $\mu$ Ci
063-100	Rod Source Set, 3" x 0.5" 0.1 $\mu$ Ci Includes: Co-57, Na-22, Cs-137, Mn-54, Co-60, Ba-133, Cd-109	
063-101	Rod Source Set, 3" x 0.5" 1.0 $\mu$ Ci Includes: Co-57, Na-22, Cs-137, Mn-54, Co-60, Ba-133, Cd-109	

## Spot Marker Source



- Used for patient orientation during the performance of a camera study
- 0.136" (3.45 mm) diameter active area is marked with purple epoxy and centered in a 1" x 0.250" (25.4 mm x 6.35 mm) clear acrylic disc
- Contained activity is supplied as a nominal value  $\pm 15\%$

Model#	Isotope	Activity
67-289	Co-57	50 $\mu$ Ci*
NMC-8200	Co-57	100 $\mu$ Ci*
4121	Co-57	200 $\mu$ Ci*
4129	Co-57	300 $\mu$ Ci*
CAL-2600-100	Ge-68	100 $\mu$ Ci*
CAL-2600-10	Ge-68	10 $\mu$ Ci*
CAL-2600-1	Ge-68	1 $\mu$ Ci*
CAL-2600-0.1	Ge-68	0.1 $\mu$ Ci

*\*We require documentation authorizing the use of Co-57 and Ge-68 in your state. Please send a photocopy of the current license.*

## Na-22 Point Source



- Activity: 100  $\mu$ Ci
- Overall Dimension: 1" Dia x 0.25" H (25.4 mm x 6.35 mm)
- Active Dimension: .40" (1 mm)
- Nuclide Purity: >99%

GF-0227 Na-22 100  $\mu$ Ci



- Co-57 uniformly dispersed in an epoxy matrix is injected into a 0.094" (2.4 mm) outer diameter flexible plastic tube having an inner diameter of 0.02" (0.508 mm)
- Overall length and active length of the ruler is 19.7" (50 cm)
- Contained activity is supplied as a nominal value  $\pm 15\%$

4110	Co-57	(100 $\mu$ Ci)	2 $\mu$ Ci/cm
4111	Co-57	(200 $\mu$ Ci)	4 $\mu$ Ci/cm

## Right & Left Marker

- Consists of two 50.4 mm diameter discs containing a total amount of 100  $\mu$ Ci of Co-57
- Each disc has a "R" or "L" milled out and filled with epoxy containing the Co-57
- A storage case is provided with each set

4117 Co-57 Total 100  $\mu$ Ci

**Auto QC Sources for  
SIEMENS SYMBIA CAMERA  
HEGL-0133 & PHI-0124**

Page 161

*Return kits are provided at No Charge for your spent source "One for One"  
US and Canada Only*