

Jaszczak Flangeless Deluxe SPECT Phantom™ Esser Flangeless Deluxe PET Phantom™



043-765



043-772 Designed for PET



2nd Deluxe Flangeless Lid

The Flangeless SPECT Phantom and the Flangeless PET Phantom meet the requirements set by ACR. The appropriate phantoms provide consistent performance information for any SPECT or PET system. The small SPECT Phantom is an ACR recommended phantom for small field of view dedicated cardiac SPECT systems. Multiple performance characteristics of camera-based SPECT systems are evaluated from a single scan of the phantom.

On-axis and off-axis transverse line spread function may be easily measured without removing the cover plate. Measurements of full-width-half (or tenth) maximum can be readily determined, either in air or in water.

The Flangeless SPECT Phantom is used for high resolution cameras, complying to the ACR requirements.

043-765 Flangeless Deluxe Phantom:

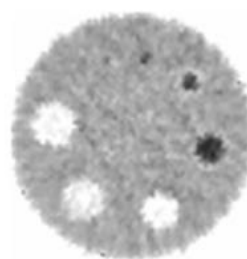
Cylinder Interior Dim.: 8.0" Dia x 7.3" H
Cylinder wall thickness: 6.4 mm
Cold Rod Insert Height: 3.46" H
Cold Rod Dia: 4.8, 6.4, 7.9, 9.5, 11.1, 12.7 mm
Height of Spheres from Base Plate: 5" H
Solid Sphere Dia: 9.5, 12.7, 15.9, 19.1, 25.4, 31.8 mm

043-759 Flangeless SPECT Phantom, Small

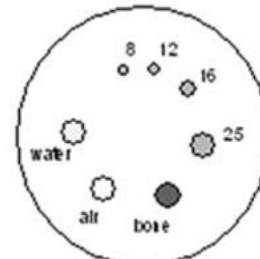
Cylinder Interior Dim.: 5.5" Dia x 5.9" H
Cylinder wall thickness: .64 cm
Cold Rod Insert Height: 1.57" H
Cold Rod Dia: 4.8, 6.4, 7.9, 9.5, 11.1, 12.7 mm
Height of Spheres from Base Plate: 3.1" H
Solid Sphere Dia: 6.4, 9.5, 12.7, 15.9, 19.1, 25.4 mm

043-772 Esser Flangeless PET Phantom:

Cylinder Interior Dim.: 8.0" Dia x 7.3" H
Cylinder wall thickness: 6.4 mm
Cold Rod Insert Height: 3.46" H
Cold Rod Dia: 4.8, 6.4, 7.9, 9.5, 11.1, 12.7 mm
Height of Spheres from Base Plate: 5" H
Solid Sphere Dia: 9.5, 12.7, 15.9, 19.1, 25.4, 31.8 mm



Pet Phantom Lid Image



Pet Phantom Lid Diagram

Specifications of PET Phantom Lid™

Refillable thin-walled cylinders: 8, 12, 16, 25 (x3) mm
Solid cylinder (Teflon®): 25 mm
Cylinder height: 1.5"
Lid Closure: Bayonet-Style with Lock Screw

- 043-765 Flangeless Deluxe SPECT Phantom, ACR
- 043-759 Flangeless SPECT Phantom, **Small**, ACR
- 043-772 Esser Flangeless PET Phantom, ACR
- 043-772-2 Esser Flangeless PET Phantom, with 2nd Deluxe Flangeless Lid for SPECT, ACR

043-777 Cardiac Phantom Insert
(See Page 142)



043-777