

Preparation Enclosure Base Cabinet



- Designed to support the Lead-Lined Preparation Enclosure (244-007)
- Full height, overlapping double doors with key locks open to an adjustable shelf with a 100 lb capacity
- May be used for decay and storage

Specifications:

Dimensions: 36.5" W x 24" D x 36.5" H

Lead Shielding: 1/4", 1/2" or 1" thick on all 6 sides

Shelf Dimensions: 30" W x 18" D, 100 lb capacity, adjustable height

Doors: Key-locked

Countertop: Stainless steel with 4" backsplash and 1/2" spillproof lip

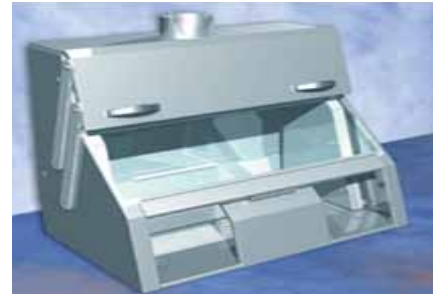
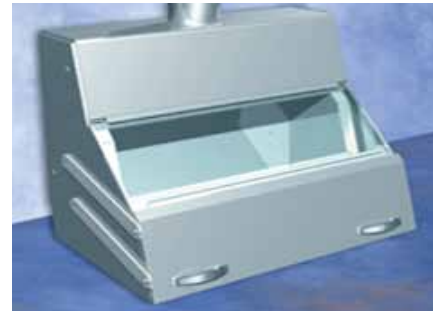
Finish: Powder coat

Weight: 244-190: 1063 lb

244-191: 1540 lb

244-192: 2433 lb

Preparation Enclosure



- Designed for applications that require handling gaseous radioactive materials
- Interior provides ample floor space
- Large lead glass window and halogen light allow safe and unobstructed viewing
- Adjustable shield creates access ports. Swing down shield covers the ports when not in use
- Gaseous materials are directed by a baffle (eliminating dead space) through a stainless steel chimney
- Chimney is connected to external blowers (not supplied) and ductwork (not supplied).
- ♦ **Blowers create a negative pressure preventing gas leaks**

Specifications:

Dimensions: 36" W x 24" D x 30.5" H

Interior Floor Space: 31" W x 19" D

Lead Shielding: 1/4" thick

Adjustable Shield: 12" W x 10" H x 1/2" thick

Exhaust: 6" diameter chimney, fixed upper and adjustable lower baffles. Blower and filter not included

Lighting: 110V halogen lamp with two 20-25 watt bulbs, UL listed

Lead Glass Window:

Dimensions: 34.5" W x 11.8" H x 3/4" thick

Density: 5.05 g/cm³

Finish: # 3 brushed, stainless steel

Weight: 733 lb

A unified countertop is available with multiple cabinets as an option.

Call For Pricing

**244-190 Preparation Enclosure
Base Cabinet, 1/4" lead**

**244-191 Preparation Enclosure
Base Cabinet, 1/2" lead**

**244-192 Preparation Enclosure
Base Cabinet, 1" lead**

**244-007 Preparation Enclosure, 1/4" lead,
110V**

**244-008 Preparation Enclosure, 1/4" lead,
220V**