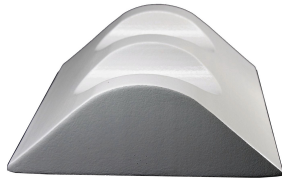


Contoured Leg Rests



NMC-71718

- 3 heights allow for positioning of patients of various heights
- Created to prevent the cycle of low back stress and pain that commonly occur during supine imaging and treatment
- Unique recesses create additional lateral support, thereby minimizing both rotational and translational body motion
- Ideal for any prolonged supine imaging study
- Ivory vinyl coating (NMC-71718 has Black vinyl coating)

NMC-805 5" H x 14.5" D X 18" W, Ivory
Ideal for Patients 5 ft tall and under

NMC-807 7" H x 17" D x 13" W, Ivory
Ideal for Patients 5 ft to 6 ft tall

NMC-810 10" H x 24" D x 18" W, Ivory
Ideal for Patients 6 ft and taller

NMC-811 Set of 3 sizes
1 each of NMC-805, NMC-807, NMC-810

NMC-71718 7" H x 17" D x 18" W, Black
Ideal for Patients 5 ft to 6 ft tall

Care-Cleaning: Spray & wipe clean with any water based medical grade germicidal



Comfort Leg Rest
CLR-807



Contour Leg Rest 7"
NMC-807



Tapered Leg Rest
TAP-807

**Be prepared for all your
patient positioning needs!**

- Comfortable Patient Support
- Fits all patients
- Tough & Durable
- Reduces Motion Artifact
- Reduces Back Pain
- Technologist Inspired
- Easy to clean
- Anatomically Correct

LEGREST SET Includes one each: CLR-807, NMC-807 and TAP-807